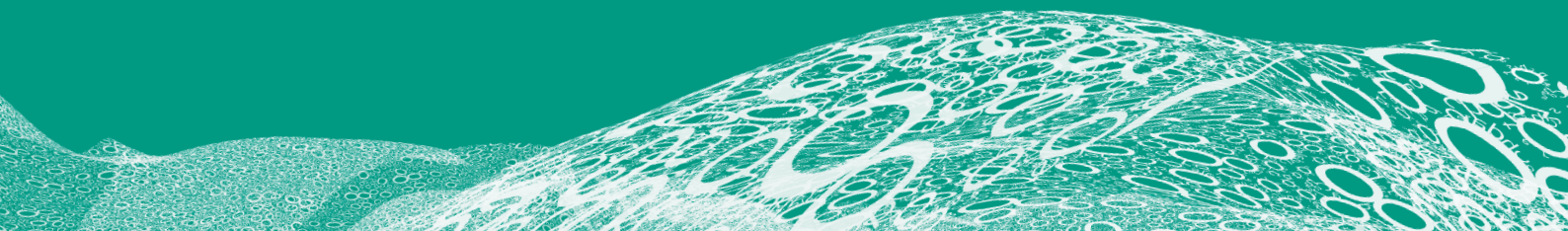




ROCHDALE
BOROUGH COUNCIL

Corporate Safety Policy





ROCHDALE
BOROUGH COUNCIL

Rochdale Borough Council Corporate Safety Policy

Contents

1. Health and safety policy statement
2. Organisation
3. Arrangements



Health and safety policy statement

The Leadership Team of Rochdale Borough Council recognises and accepts its responsibilities as an employer for providing a safe and healthy working environment for all employees. The Leadership Team also recognises the health and safety impact of the Council's work with regards to service users, pupils, contractors, members of the public, and anyone else who may be affected by the Council's work activities, and will take all reasonable steps to protect these people.

The Council will fully comply with the requirements of the Health and Safety at Work etc. Act 1974 and all other relevant health and safety regulations and standards and will, as far as is reasonably practicable, fulfil these requirements.

Acting Chief Executive
October 2014

Organisation

This section outlines the responsibilities of each member of the organisation for implementing and complying with this policy. Every member of the organisation must accept and ensure that they understand their personal responsibilities for health and safety, and achieve and maintain these to the appropriate standard.

Chief Executive

The Chief Executive has overall responsibility for the implementation of the Council's safety policy and will provide leadership which supports and strengthens the Council's health and safety culture. Through the Leadership Team, the Chief Executive will ensure that responsibilities are met and that adequate resources are made available to enable this Policy to be implemented.

Leadership Team

Through its management structure, the Leadership Team will promote and develop a positive attitude by ensuring that health and safety is an integral and prominent function of the overall management culture. Collectively and individually they are required to:

- Provide visible leadership, leading by example and considering health and safety implications for all strategic decisions;
- Ensure that each Service examines its own work activities and puts in place effective safety management systems;
- Ensure that the necessary resources are available for the management of health and safety;
- Demonstrate a clear commitment to continuously improve health and safety performance;
- Provide effective communication and consultation arrangements for health and safety;
- Allocate a health and safety lead to support the aims of this policy; and
- Ensure that the Safety Policy is fully implemented.

Rochdale Borough Council Corporate Safety Policy

Leadership Team Health and Safety Lead

The Leadership Team member appointed as the health and safety lead will:

- Regularly meet with the Corporate Safety Adviser to provide strategic support with regards to corporate health and safety matters;
- Bring to the attention of the Leadership Team relevant health and safety issues;
- Discuss with the Corporate Safety Adviser the health and safety priorities and strategies for the Council, and monitor their progress;
- Attend the Central Health, Safety and Welfare Committee to represent the Leadership Team; and
- Be the point of contact to escalate serious non-compliance through the Leadership Team.

Heads of Service / Senior Managers (SMT) / Headteachers

These are responsible for implementing and monitoring the Council's safety policy in areas which come under their direct management control. They are required to:

- Provide visible leadership, encouraging employees to achieve high standards of health and safety, and ensure that health and safety has equal priority with all other activities;
- Ensure that health and safety responsibilities are clearly and logically delegated to successive levels of management who are sufficiently senior and competent to discharge them;
- Comply with all relevant health and safety legislation as a minimum, conform to any specific Council policies relating to health and safety, and wherever practicable, seek to adopt best practice in respect of health and safety;
- Implement health and safety management systems that will identify and control risks, and regularly monitor and review the preventative and protective measures employed;
- Ensure employees are properly instructed and trained in their health and safety responsibilities and that they discharge these effectively; and
- That information regarding their particular areas of control are detailed in the Section Safety Procedures (appendix 1).

Elected Members & School Governors

Elected Members and School Governors must ensure that any decisions they make reflect the requirements of this safety policy and that they promote compliance with statutory requirements as a minimum standard.

All employees

All employees (including those above) are required to:

- Take reasonable care of their own health and safety and for any other person who may be affected by their actions;
- Not intentionally or recklessly interfere with or misuse anything provided for health and safety;
- Co-operate with managers and supervisors to enable the Council to comply with their health and safety obligations;
- Participate in any instruction or training that is provided for health and safety;
- Report any accident, incident, injury or near miss using the Council's reporting procedure;
- Report any unsafe, unhealthy or hazardous working conditions to their Line Manager;
- Seek advice if they do not feel competent to carry out their responsibilities; and
- Make themselves aware of, and follow the responsibilities, as detailed in this policy and any arrangements set out locally.

In addition to their general responsibilities, certain employees have a supporting role, or are requested to provide technical advice to managers and employees. These responsibilities are detailed in the following sections.

Rochdale Borough Council Corporate Safety Policy

Specialist Support Safety Team

The Safety Team will provide professional and competent advice, guidance and support to the Executive Directors, Heads of Service and personnel who have responsibilities for health and safety in implementing the Council's policy. Support will be given in complying with legislative requirements and in promoting the continuous improvement of health and safety standards.

Health and Safety Representatives

Safety representatives appointed by the recognised trade unions will be consulted on matters relating to the health, safety and welfare of employees in good time so that effective consultation can take place. They will help create a positive health and safety culture by working in partnership with management on health and safety matters. Safety Representatives will work in accordance with their statutory rights as defined in the Safety Representatives and Safety Committees Regulations 1977 (as amended).

Arrangements

This section sets out the Council's specific arrangements for managing health and safety. The arrangements follow the requirements of the Health and Safety at Work etc. Act 1974 and other relevant legislation, and give details on how people should meet these responsibilities. Because of their legal status they are mandatory requirements of this policy and it is important that managers and employees follow them.

There are guidance notes to supplement these arrangements. These are regularly reviewed and updated to ensure they continue to work for the Council. If you need any help or assistance with any of the items listed below, please either contact your Line Manager or the Safety Team on 01706 92 5615/5060.

Work Environment

All workplaces will be provided with adequate welfare facilities and be maintained to a safe standard, including adequate access and egress. All employees should maintain good housekeeping standards. Defects or unsafe conditions should be put right, if this is not possible, they should be reported to the appropriate Line Manager or the Building Manager as soon as possible, following the appropriate procedure.

Safe Plant, Equipment and Services

Those responsible for purchasing work equipment, plant or services will make reasonable checks for health and safety standards and assess for suitability. Where appropriate, equipment and plant should conform with European Community requirements by holding a CE marking. Once purchased, arrangements should be made to keep equipment and plant in good working order by following the manufacturer's recommendations. These could include arranging for suitable maintenance, inspection and servicing and for providing the appropriate markings and warnings.

Risk Assessment

All job roles and work activities within the Council will be assessed and significant health and safety risks recorded. Control measures will be put in place to protect staff or others that may be affected by the work activities. The risk assessment should identify further actions that will be required to reduce the risks to at least a tolerable level. Once complete, the risks identified and control measures put in place for protection will be communicated to staff.

Chemicals and Hazardous Substances (Control of Substances Hazardous to Health - COSHH)

All hazardous substances, chemicals or products will be used, stored and disposed of in accordance with the manufacturer's instructions or the relevant legislative requirements. Where necessary, the appropriate COSHH risk assessments will be carried out.

Rochdale Borough Council Corporate Safety Policy

Following the COSHH risk assessments, exposure will either be prevented, or where this is not reasonably practicable, adequately controlled. Where measures are put in place to control exposure, these will be maintained, examined and tested to ensure their continued effectiveness. Information, instruction and training will be given to those employees exposed to hazardous substances, including the potential risks and the control measures in place to prevent exposure. PPE will be provided only as a last resort for controlling exposure.

Personal Protective Equipment (PPE)

The Council accepts that the use of PPE is a last resort and is committed to continuing to seek alternative methods of reducing risk. Where risks identified through risk assessments cannot be removed or adequately controlled by other means, employees will be provided with the most suitable and sufficient personal protective equipment and given training in its use, storage and maintenance. Managers are responsible for issuing, maintaining, repairing and replacing the equipment and for ensuring its proper use.

Health Surveillance

Arrangements for a programme of health surveillance will be put in place where it is identified, through the risk assessment process, that exposure to harmful substances or operations could potentially harm the employee's health. Pre-employment screening will take place for those employees starting in a role where a health hazard has been identified. Records of all health surveillance will be kept by the employing Service.

Consultation with Employees

Management will consult with the recognised trade unions and appointed safety representatives through the Safety Action Groups and the Central Health, Safety and Welfare Committee. Each group will meet four times per year. Safety representatives will be provided with the necessary information to allow them to fully and effectively consider health and safety matters. Consultation meetings give staff, via their safety representatives, the opportunity to discuss and exchange views on health and safety matters with management, to reach a better understanding on matters and procedures relating to health and safety.

Accident & Incident Reporting and Investigation

All employees are responsible for following the Council's incident reporting procedure. Employees should report all accidents and incidents to their Line Manager, who must then promptly and properly report them to the Safety Team. Line Managers are responsible for familiarising themselves with the reporting procedure and the Reporting of Injuries, Diseases and Dangerous Occurrences Regulations (RIDDOR) and informing the Safety Team as appropriate when an incident occurs. The Safety Team will report these to the Health and Safety Executive, where required, on behalf of the Council.

Line Managers are responsible for investigating all accidents, incidents or near misses to identify the cause and to take the appropriate steps to prevent a recurrence. Serious incidents will be investigated jointly with the Safety Team.

Emergencies

Procedures will be put in place in each workplace to deal with emergency situations by the person responsible for the building (e.g. Building Manager, Headteacher, etc). Nominated personnel will be assigned roles to assist in emergencies and be given the appropriate training, e.g. first aid, fire wardens, etc. The emergency evacuation plan will be communicated to all members of staff within the building. Line Managers are responsible for preparing a Personal Emergency Evacuation Plan (PEEP) for any member of their staff requiring assistance to evacuate in an emergency. This should then be forwarded to the Building Manager for information.

Fire

Building Managers or the person in control of a building (e.g. Headteacher) are responsible for ensuring that all the necessary fire safety controls are in place and are being managed. Employees as building users will be instructed on the procedures to follow in an emergency evacuation situation and must follow these as necessary.

First Aid

Building Managers or the person in control of a building (e.g. Headteacher) will ensure that a sufficient number of trained first aiders and equipment to deal with injuries or ill health is provided. First aid requirements will be identified through the risk assessment process to ensure the adequacy and appropriateness of first aid personnel, equipment and facilities.

Health and Safety Training

Induction training

Line Managers will ensure that all new employees go through a health and safety induction programme on taking up employment. Inductions will vary from Service to Service, the higher risk areas should provide site / risk specific induction.

General health and safety training

The health and safety training needs of all employees will be identified through the risk assessment process. Where appropriate, information, instruction and training will be provided to ensure that employees have the competency to carry out their work safely. Where mandatory health and safety training is required, managers must ensure that employees are provided with this, including information on the hazards and the risk control measures in place.

Employees must participate in any instruction or training provided to enable the Council to comply with their health and safety obligations. Records of all employees' health and safety training must be kept by the employing Service.

Disciplinary procedure

Disciplinary action will be taken against any employee who is found to have knowingly failed to follow safety procedures or standards, or interfered with or failed to use protective equipment provided for health and safety. The Council's Disciplinary Procedures will be followed.

Monitoring and auditing

Services will continuously monitor their health and safety performance through incidents, ill health, or near miss reports, followed by reviewing applicable risk assessments to ensure control measures remain effective. Managers are also expected to monitor health and safety performance at a local level by, for example, undertaking safety tours, inspections and checking that control measures are being followed.

The Safety Team will carry out monitoring and periodic audits to determine whether services are achieving the required standards of health and safety performance, and whether the Council is fulfilling its obligations with regard to health and safety legislation.


Policy Review

The Corporate Safety Policy will be reviewed periodically to ensure its continuing suitability, adequacy and effectiveness and to encourage continuous improvements in health and safety performance.

Each section of the Council should record their Section Safety Procedures as a separate document, attached as appendix 1.

Rochdale Borough Council
Number One Riverside
Smith Street
Rochdale OL16 1XU

 www.rochdale.gov.uk

 01706 647474

 council@rochdale.gov.uk

